



# INSTALLATION INSTRUCTIONS

## DUAL REAR STAINLESS SLIP ON CAN-AM MAVERICK X3 Turbo Model

**PART #98033**



ITEM	PART #	QTY	DESCRIPTION
A	999700966S	1	STAINLESS STEEL MUFFLER ASSMEBLY
B	999700967S-B	1	UNDERBED HEADSHIELD
C	999700968S-B	1	REAR BEAUTY PLATE
D	500433	2	4" INTERCOOLED STAINLESS TIPS

**Note: This meets all California and EPA federal and State Regulations.**

**Thank you for purchasing our Gibson Exhaust system for your vehicle.  
If you need further assistance, please do not hesitate to call our technical dept at (800) 528-3044  
Monday through Friday, 8:00 am to 5:00 pm.**

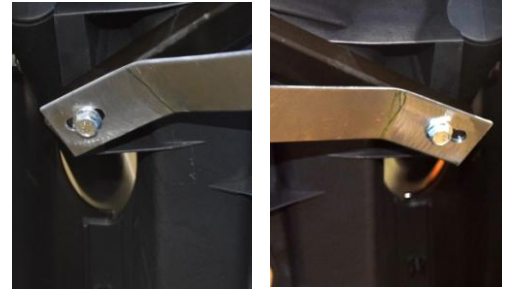
# EXHAUST INSTALLATION

## PART# 98033

WHEN INSTALLING THIS EXHAUST SYSTEM MAKE SURE TO USE ALL THE PROPER SAFETY PRECAUTIONS. USE JACK STANDS WHEN UNDER TRUCK, SET PARKING BRAKE, BLOCK TIRES AND USE SAFETY GLASSES.

**DO NOT WORK WITH HOT PIPES!!!**

1. Disconnect the negative battery cable before removal of the OEM Exhaust. This will allow the computer to reset and recognize the new exhaust. Lay the exhaust on the floor so it looks like the drawing and compare parts with manual. Remove the factory exhaust by removing the factory rear exhaust cover. You will re use the factory hardware for the Gibson beauty plate. Disconnect the 4 factory exhaust springs. Remove the 13mm bolts located at the lower portion of the muffler. Do not damage the gasket, bolts, or springs as they will be re used.



2. Install Item #B heat shield. Remove the 10mm bolts that attach the bed to the frame. You will use this hardware to mount the Gibson heat shield. Tighten and secure all hardware.

3. Install the Muffler Item A onto the factory muffler mount. Be sure the gasket has been re installed. RE install the factory hardware to support the muffler. Do not tighten.

4. with the inlet pipe slipped over the factory gasket and springs not secure the muffler brackets using the factory hardware. Do not tighten. Install the factory springs and tighten all hangers and brackets attached to the muffler assembly.



5. Install the Gibson exhaust tips to your desired look end length. You may need to loosen of the exhaust and re adjust to find the perfect position. Tighten down your Gibson exhaust tips securely.

6. Install the Gibson Beauty Plate re-using the factory hardware. Be sure to remove all packaging material from all components before starting the vehicle. Double check you have proper clearance from all sides of the exhaust.

7. After your first couple runs double check clearance and re tighten all connections to prevent any movement caused by heat and usage of vehicle.

**"MAKE SURE YOU HAVE A 1" CLEARANCE ON ALL PIPES FROM ALL RUBBER BRAKE LINES, SHOCK BOOTS, TIRES, ETC..." TORQUE ALL CLAMPS TO APPROX. 100 TO 150 FT LBS.**